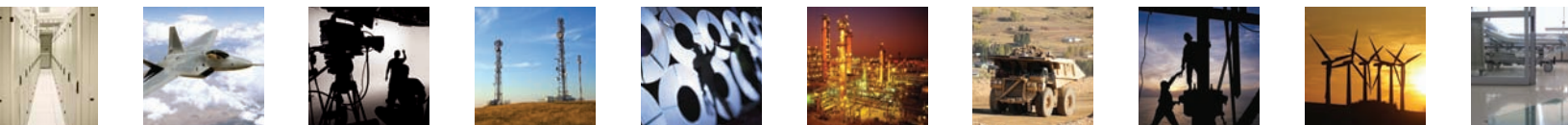


HARSH ENVIRONMENT FIBER OPTIC CONNECTIVITY

Connectors, Cable Assemblies, & Custom Products



Military Aerospace Shipboard Industrial Mining Transportation Oil & Gas Broadcast Manufacturing Marine Energy Medical



QPC PROPRIETARY CONNECTORS



QLink

- Mass Customizable Hybrid Connector System
 - 1Ch to 36Ch / 12 x Shell Sizes, 0.5" to 2.0" OD
 - Threaded, Bayonet, and Push-Pull Couplings
 - Pin & Socket or Hermaphroditic
 - Plugs, Jam Nut, and Flange Receptacles with and without Backshells
 - Cable OD up to 24.0mm
- Contact Options: 1.25mm & 2.5mm Fiber (Spherical or Angled), 2.0mm Expanded Beam Contacts, MT Ferrules, Power / Signal Copper Contacts, and RF Contacts
 - Rear Accessory Threads to Accommodate a Variety of Backshells, Individual Cable Strain Relief Options, and Conduit Adapters



QPlex

- 12Ch / 16Ch Pin & Socket Modular Expanded Beam Connector System
 - Plugs: Three or Four Insert Positions
 - Receptacles: Three or Four Insert Positions, Jam Nut and Flange Mount, with and without Backshells
 - Cable OD up to 9.5mm
- Sealed to IP68
 - Available in Custom Hybrid (Fiber / Copper) Configurations



ELink

- 4Ch / 12Ch / 18Ch Pin & Socket Physical Contact Connector System
 - 4Ch / 12Ch / 18Ch / 24Ch Hermaphroditic Physical Contact Connector System
 - Receptacles: Flange Mount with and without Backshells
 - Cable OD up to 9.5mm
- Sealed to IP68
 - Available in Custom Hybrid (Fiber / Copper) Configurations
 - 18Ch / 24Ch Hermaphroditic Plugs include a Locking Ring Feature for Easy Hermaphroditic Mating / De-Mating



High Density

- 4Ch / 20Ch / 28Ch / 48Ch Pin & Socket Physical Contact Connector System
 - Plugs: With Triple Start Threads and Ratcheting Coupling Rings
 - Receptacles: Flange Mount with and without Backshells
 - Variety of Conduit Adapters Available
- Sealed to IP50
 - Shells Designed to MIL-DTL-38999 Series III with Custom Inserts to Support Higher Channel Density
 - Available in Custom Hybrid (Fiber / Copper) Configurations



QGrip

- 2Ch - 24Ch Ruggedized Cable Furcation Kit
 - Body: Black Hard Anodized Machined Aluminum, Designed to Accommodate Various Sizes of Crimp Strain Reliefs
 - Legs: 3mm Color Coded Subunits Designed to Accept 900µm Buffered Fiber, 36" Long
 - Cable OD up to 9.5mm
- Sealed to IP50
 - Available with Optional Mesh Pulling Grip
 - Available with Custom Laser Marking / OEM Private Labeling

QPC INDUSTRY STANDARD CONNECTORS



QMini

- 2Ch / 4Ch Hermaphroditic Expanded Beam Connector System
- Plugs: With and without Rubber Grip
- Receptacles: Jam Nut, Flange Mount, and XLR Compatible Flange Mount, with or without Backshells
- Cable OD up to 7.5mm
- Sealed to IP68
- Designed to MIL-DTL-83526/20 (Plug) & MIL-DTL-83526/21 (Jam Nut Receptacle)
- Intermateability: Tyco Pro Beam Jr., Amphenol TACBeam, Glenair GMA, Stratos HMA, Fibreco Junior D, DiGiCo Compatible



QMicro

- 2Ch / 4Ch Hermaphroditic Expanded Beam Connector System
- Plugs: With and without Rubber Grip
- Receptacles: Jam Nut, Flange Mount, and XLR Compatible Flange Mount, with or without Backshells
- Cable OD up to 6.5mm
- Sealed to IP68
- Intermateability: Tyco Pro Beam Mini, Stratos HMC, Fibreco Mini 2, Telecast MX
- Low Profile Receptacle Backshell Available for 2mm Simplex Cables



QSeal & QLine

- 2Ch / 4Ch Pin & Socket Push-Pull Physical Contact Connector System
- Plugs: With and without Rubber Grip
- Receptacles: XLR Compatible Flange Mount with direct LC Duplex Connection on the back
- Cable OD up to 6.5mm
- Sealed to IP67
- Intermateability: Neutrik OpticalCon Duo (2Ch) and OpticalCon Quad (4Ch)
- QLine Adapter allows Plug to Plug Connections in longer systems



QFoca & QDrive

- 4Ch / 12Ch / 12Ch Hybrid Hermaphroditic Physical Contact Connector System
- Plugs: Available with Hawke Glands and Wire Mesh Cable Grip Options
- Receptacles: Jam Nut and Flange Mount, with or without Backshells
- Cable OD up to 18.5mm
- Sealed to IP68
- Designed to MIL-DTL-83526/16 (Plug) & MIL-DTL-83526/17 (Jam Nut Receptacle)
- Intermateability: Amphenol TFOCA-II, OCC TFOCA 2, Delphi DFOCA, Glenair GFOCA
- QFoca-EZ Version Compatible with OCC's EZ-MATE Product Line



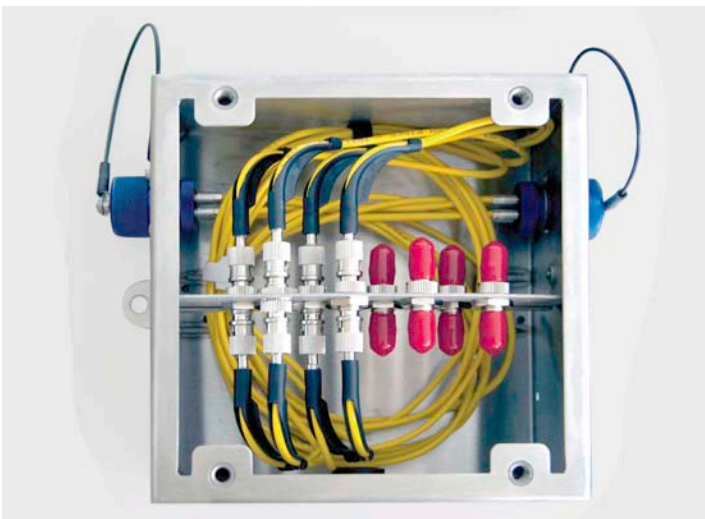
QBeam

- 4Ch Hermaphroditic Twist-Lock Expanded Beam / Lensed Connector System
- Plugs: Aluminum Construction
- Receptacles: Jam Nut and Flange Mount, with Low Profile Backshell for 2mm or 3mm Simplex Cables, Stainless Steel Construction
- Cable OD up to 6.5mm
- Sealed to IP68
- Intermateability: Amphenol CTOS 976 Series Product Line
- Only Available for Multimode Fiber

QPC CABLE ASSEMBLIES

QPC Fiber Optic manufactures a wide range of fiber optic and hybrid cable assemblies / harnesses, with or without QPC product content. We draw from our decades of experience to help our customers choose the appropriate connectors, cable, fiber, and accessories to design custom cable assemblies. Or, we build customer specified cable assemblies to print. QPC documents each custom cable assembly we build with a Product Definition Package, which includes a detailed drawing with bill of materials, as well as labeling, testing, and packaging requirements to ensure consistency from build to build. The capabilities listed below are constantly expanding based on technology improvements and market demands.

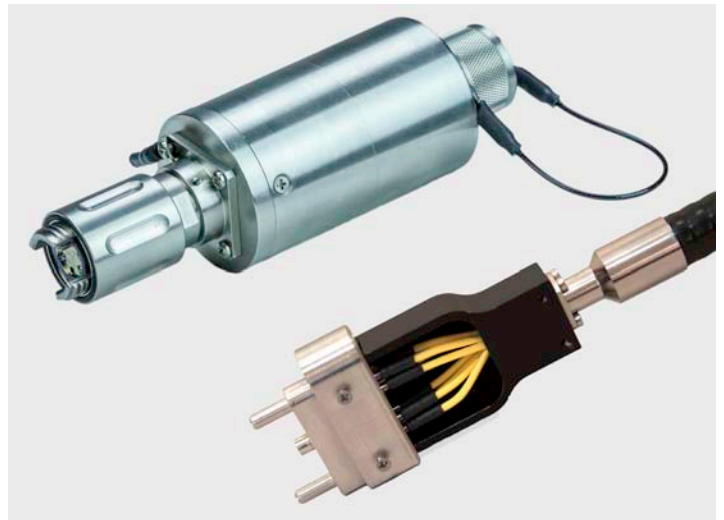
- **Connector Types:** All QPC Connectors (Proprietary & Industry Standard), Mil Spec (M28876, D38999, M83526, M29504 Termini), ARINC, Tyco / Deutsch MC3 MKII, Esterline / Souriau Elio, ODVA LC Interface, E2000, LC, ST, SC, FC
- **Cable Types:** Mil Spec (M85045), Tactical, Aerospace, Shipboard, Distribution, Armored / Non-Armored, MSHA Rated, ABS Approved, Hybrid, Conduit Systems, and Specialty Application Cables
- **Standard Fiber Types:** Small Core Single Mode (5/125 μ m), Standard Single Mode (9/125 μ m), OM1 - Graded Index Multimode (62.5/125 μ m), OM2 / OM3 / OM4 - Graded Index Multimode (50/125 μ m), Graded Index Multimode (100/140 μ m)
- **Specialty Step Index Multimode Fiber:**
 - Core / Cladding Size: 105/125 μ m to 1000/1100 μ m
 - Construction: Silica/Silica or Silica/Hard Clad
 - Wavelength: 190nm - 2400nm
 - Numerical Aperture: 0.12 - 0.38
 - Temperature Range: -190°C to + 350°C
 - Coatings: Polyimide, Nylon, Tefzel
 - High Power and Sensing Applications
- **Accessories:** In-Line Splitters / Couplers / Switches, Integrated Hardware / Patch Panels, Reels, Breakouts, and Pulling Grips



QPC CUSTOM PRODUCTS

QPC Fiber Optic specializes in solving our customers' most difficult challenges by designing and manufacturing unique, application-specific, custom fiber optic connectors, assemblies, and hardware. We use an effective four-step stage gate Product Development Process to transform ideas and needs into engineering designs, then to prototypes, and finish with repeatable production parts. QPC has in-house machining, including manual machinery for low volume parts and fixtures, and CNC machinery for higher precision and volumes. We offer industry-leading service, performance, and quality from the initial point of contact through final product delivery.

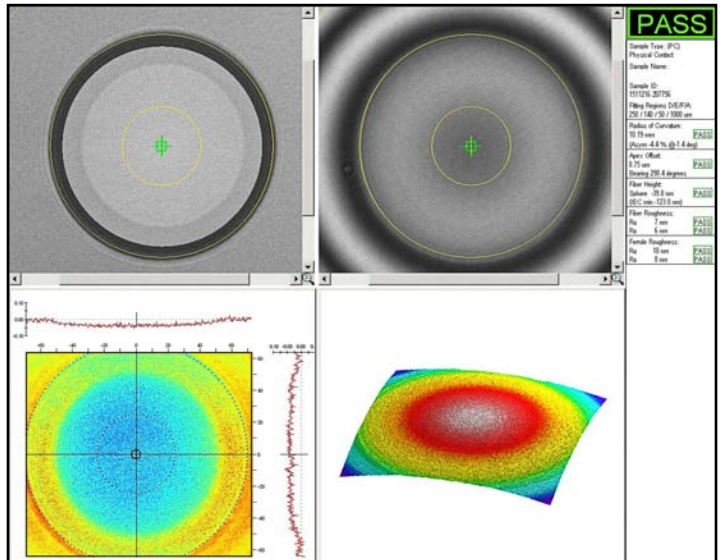
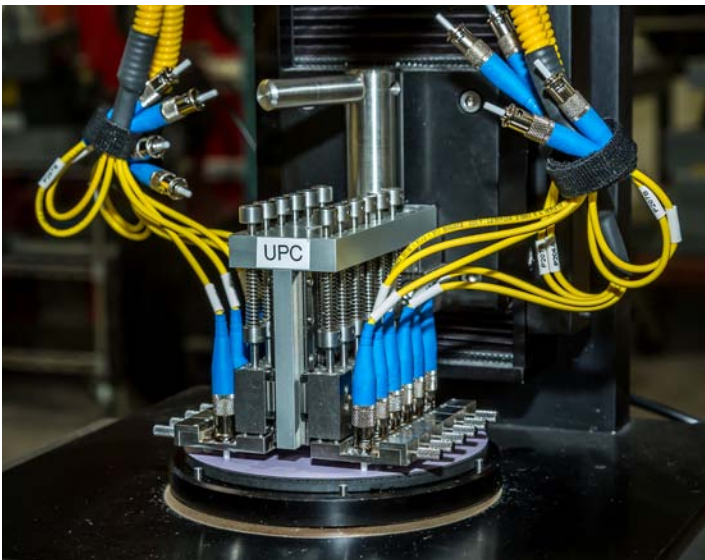
- **Connector Types:** Circular, Rectangular, Rack & Panel, Blind Mate, Locking, Cable Release, Break Away, High Density, and Modular
- **Cable Types:** Single / Multiple Fiber, Armored / Non-Armored (Various Armor Types), Jacketed / Un-Jacketed (Various Jacket Materials, Flame Ratings, Colors), Custom Hybrid Cables, and Conduit Systems
- **Fiber Types:** Wide range of standard and specialty optical fibers available based on end application
- **Termini / Contacts:** Pin & Socket or Genderless Fiber Optic Termini with Spherical or Angled Polish, Expanded Beam Inserts or Individual Termini, Multichannel (MT) Ferrules, Power / Signal Copper Pin & Socket or Genderless Contacts, and RF (Coax, Twinax, Triax, Quadrax) Contact
- **Backshell / Cable Entry:** Can be designed to accommodate nearly any cable (Single or Multiple) or conduit construction in any orientation
- **Connector / Insert Materials:** Aluminum, Stainless Steel, Brass, Bronze, Composite, with Various Conductive / Non-Conductive Plating Options Available
- **Environmental Considerations:** Size, Weight, Temperature, Vibration, Shock, Sealing, Corrosion, Electromagnetic Interference (EMI), and Explosion Rating - QPC verifies in house or in partnership with a third-party test laboratory



QPC COMPANY PROFILE

QPC Fiber Optic is an optical technology company based in Southern California, serving customers worldwide since 1999. We design and manufacture fiber optic connectors, fiber optic cable assemblies, and custom fiber optic products for use in harsh environments. Our connector product portfolio includes QPC's proprietary connector lines, industry standards, modified standards, and full engineered customs. We are one of the few companies in our industry that welcomes low initial volume custom product development projects. Our team is able to draw upon QPC's extensive design experience and leverage our in-house manufacturing capabilities to allow us to design, prototype, manufacture, and deliver solutions in weeks, not months. Effective March 2016, QPC was acquired by its Senior Management and has enhanced its focus on technical product development and target market growth.

Our customer base is 1st and 2nd Tier Defense System Integrators, Original Equipment Manufacturers (OEMs), High-End Equipment Rental Houses, and Cable Assembly / Harness Manufacturers. QPC's business is diverse, with 50% Military / Aerospace (Air, Land, and Sea), 25% Broadcast (Mobile Video Broadcast, and Pro-Audio), and 25% Industrial (Oil & Gas, Mining, Marine, Scientific, and Medical). QPC has a global network of Manufacturers' Representatives, Value Add Re-Sellers, and Stocking Distributors to assure our customers will have local points of contact and multiple support options.



QPC Fiber Optic, LLC
27612 El Lazo Road, Laguna Niguel, CA 92677
P: 949.361.8855 • F: 949.361.8949
www.qpcfiber.com

Document: SPS-2017

